



Aimpoint®

RED DOT SIGHTS FOR HUNTING & SPORT SHOOTING

PRODUCTS 2020



THE AIMPOINT PHILOSOPHY

When the time comes to take the shot, there should be no question that you can count on your sight to perform. We believe that a sight should simplify aiming while meeting the highest possible requirements for reliability and ruggedness.

We know that conditions in the field place extreme demands on your equipment, so we design and test Aimpoint products to stand up to any condition you are likely to encounter. We also design our products to operate constantly for years on a single battery so your sight will be ready when you are.



WHY AN AIMPOINT® RED DOT SIGHT?

To be successful, shooters must be able to aim accurately and quickly under a wide variety of conditions. On a shooting range, there is plenty of time to take aim, but in the real world everything is in fast motion. Add rough terrain, foul weather, poor light and high level of stress and even the most experienced hunter will be put to the test.

Tests have repeatedly proven that the single red dot reticle is the fastest on target in timed and rapid-fire close target exercises and also provides the greatest increase in hit probability with moving targets. Other aiming devices require that the shooter's focus leaves the target or create limited situational awareness. Aimpoint red dot sights give you increased aiming confidence, allow you to remain on target and shoot with both eyes open, fully aware at all times.

GET THE WHO

Many great hunting opportunities happen suddenly, and you have to be ready when game appears.

An Aimpoint[®] sight gives you a tremendous advantage. Aiming with both eyes open allows you to see the animal as well as the surroundings.

You instinctively place the red dot on the game, and are ready to pull the trigger.

We design our sights to make you effective and extremely fast when you really need to be.



OLE PICTURE



”In the east of France where I mainly hunt, we are used to fast shots at close distances. With both eyes open the Aimpoint red dot sight gives me the advantage of quickly telling the sex and the size of the game and take an ethical shot.”

Felieu Chasse
Hunting federation director
and social media icon





Scan to watch



ALL CONDITIONS – ANYWHERE

Aimpoint® sights work in all light conditions, from the darkness of the forest before dawn, to bright mountain sunlight. They are completely waterproof so you never have to worry about rain or immersion. Aimpoint sights are developed and tested to be used in any weather conditions, from the sub-zero temperatures of the Arctic to the heat and humidity of the tropics.

ON ANY TYPE OF FIREARM

Whether you have a rifle, shotgun, handgun, black powder rifle or bow, Aimpoint has a sight for you.

Our mechanical switch and push buttons will not freeze and are easy to operate whether you are wearing gloves or not.

USER FRIENDLINESS

Aimpoint sights are very user friendly. Operated by a mechanical switch or pushbuttons, an Aimpoint sight can be easily and quickly changed to the right setting while simultaneously aiming.

ENVIRONMENTAL AWARENESS

At Aimpoint, we take great pride in making sure that neither hazardous nor radioactive materials are used in our sights.

STANDARD FEATURES ON ALL AIMPOINT® SIGHTS

- Unlimited field of view
- Absence of parallax - No centering needed
- Unlimited eye relief
- Operational in extreme weather conditions
- Extremely rugged, durable construction
- No hazardous materials
- No laser emission that could be harmful to your eyes
- Increased aiming confidence and hit probability
- Reduced training time and ammunition consumption
- Battery life measured in years

ACRO C-1™

The Aimpoint® Acro C-1 was developed for use on pistols but the available adapter plates makes it an allround sight for a number of weapon platforms. This robust sight is the smallest enclosed red dot system on the market.

ACRO C-1™

Item No	200548
Dot size	3.5 MOA
Battery life	More than 1,5 years of use on setting 6
Battery type	One 3 V lithium CR1225 battery
Power switch	Push button
Weight (sight only)	60 g



Scan to watch



ACRO C-1™

WITH FIXED MOUNT FOR PICATINNY/WEAVER

Item No	200667
Dot size	3.5 MOA
Battery life	More than 1,5 years of use on setting 6
Battery type	One 3 V lithium CR1225 battery
Power switch	Push button
Weight (sight only)	94 g



Tested with a minimum of 20,000 rounds on a .40 cal pistol slide, this small optic has proven to lead in ruggedness and reliability. It is a lightweight, low-profile optic that provides fast target acquisition and an unlimited field of view for hunters as well as sport shooters. The enclosed system makes it reliable and operational in any weather conditions.

EXAMPLES OF MOUNTING SOLUTIONS



Acro QD Mount 22 mm
Quick Detachable Mount for Acro sights. Raises height of optical axis to 22 mm. Fits on Weaver and Picatinny rail.

Item. No. 200517



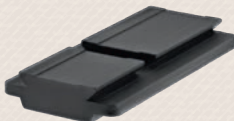
Acro QD Mount 30 mm
Quick Detachable Mount for Acro sights. Raises height of optical axis to 30 mm. Fits on Weaver and Picatinny rail.

Item. No. 200518



Acro QD Mount 39 mm
Quick Detachable Mount for Acro sights. Raises height of optical axis to 39 mm. Fits on Weaver and Picatinny rail.

Item. No. 200519



Acro Adapter Plate for Micro Interface
Allows compatibility with all Micro sights mounting solutions.

Item. No. 200526

The different adapter plates available make it possible to mount the Acro C-1 on several weapon platforms used by sport shooters as well as hunters. For more Acro mounting solutions adapted for specific weapon types see page 20.

Mounts information on page 20.
More tech details on page 22-24.





Scan to watch



Since its introduction the Aimpoint® Micro sight has become the worldwide standard for compact reflex sight. Hunters have embraced this sight for its compact size, durability, and extremely long battery life.

MICRO™ SERIES SIGHTS

With all of the ruggedness that has made Aimpoint® sights famous all over the world, Aimpoint Micro series sights are able to withstand the toughest conditions while adding negligible weight to your firearm. Shotguns, rifles, handguns or archery, these sights can do it all!

MICRO H-2™

Item No	• 200185 (2 MOA) • 200183 (4 MOA) • 200499 (6 MOA)
Dot size	2 MOA / 4 MOA / 6 MOA
Battery life	50 000 h
Battery type	CR2032 (3 V)
Weight (incl. mount)	132 g / 4.7 oz
Power switch	Rotary switch
Mounting	Picatinny/Weaver



The Micro H-2 is a result of feedback coming from hard core customers desiring an even more hard core Micro sight. With a redesigned and reinforced house body, as well as flip-up covers protecting the lenses, the Micro H-2 can withstand all types of environmental conditions. And thanks to new optical lenses and cutting edge lens coatings, the optical performance and the shape and clarity of the red dot are radically improved.

MICRO H-2™

**WITH MOUNT
FOR TIKKA T3**

Item No	200221
Dot size	2 MOA
Battery life	50 000 h
Battery type	CR2032 (3 V)
Weight (incl. mount)	150 g / 5.3 oz
Power switch	Rotary switch
Mounting	Tikka T3



The two attachment points lead to a solid and professional mount for the most demanding hunters. The Aimpoint® Micro H-2 2 MOA and Tikka T3 low mount are sold as a kit. The mount can also be bought separately.

MICRO H-2™

WITH BLASER ORIGINAL MOUNT

Item No	200187
Dot size	2 MOA
Battery life	50 000 h
Battery type	CR2032 (3 V)
Weight (incl. mount)	243 g / 8.6 oz
Power switch	Rotary switch
Mounting	Blaser Saddle Mount



This mount utilizes both of the mounting points featured on Blaser rifle barrels. Quick detach levers allow this sight to be mounted and dismounted quickly, and without loss of zero. This mount fits on all Blaser guns with the Blaser saddle mount interface. The sight and mount are sold as a complete kit only.

MICRO H-2™

WITH MOUNT FOR FOR LEUPOLD QR RAIL

Item No	200220
Dot size	2 MOA
Battery life	50 000 h
Battery type	CR2032 (3 V)
Weight (incl. mount)	160 g / 5.6 oz
Power switch	Rotary switch
Mounting	Leupold QR



The quick mounting using two levers, makes it possible to swiftly dismount and remount without the accuracy being affected. The mount is suitable for all Leupold QR bases with two anchor points. The Aimpoint® Micro H-2 2 MOA and the mount for Leupold QR rail are sold as a kit. The mount can also be bought separately.



MICRO H-2™

WITH MOUNT FOR SEMI-AUTOMATIC RIFLES

Item No	200253
Dot size	2 MOA
Battery life	50 000 h
Battery type	CR2032 (3 V)
Weight (incl. mount)	143 g / 5.0 oz
Power switch	Rotary switch
Mounting	· Browning Bar/Maral/BLR · Winchester STX · Benelli ARGO



The Micro™ mount for the most common semi-automatic rifles (Browning Bar/Maral/BLR, Winchester STX, Benelli ARGO) is attached directly to the action. The Aimpoint® Micro H-2 2MOA and the Micro mount for semi-automatic rifles are sold as a kit. The mount can also be bought separately.

MICRO H-2™

WITH MOUNT FOR SEMI-AUTOMATIC SHOTGUNS

Item No	200254
Dot size	4 MOA
Battery life	50 000 h
Battery type	CR2032 (3 V)
Weight (incl. mount)	142 g / 5.0 oz
Power switch	Rotary switch
Mounting	Dovetail (11-13 mm)



The Micro™ mount for semi-automatic shotguns is attached on the rifle with dovetail (11.0-13.0 mm). The mount uses double anchor points. It is extremely robust and a high-grade product. The Aimpoint® Micro H-2 2MOA and the Micro mount for semi-automatic shotguns are sold as a kit. The mount can also be bought separately.

MICRO H-2™

WITH MOUNT FOR SAUER 404

Item No	200223
Dot size	2 MOA
Battery life	50 000 h
Battery type	CR2032 (3 V)
Weight (incl. mount)	244 g / 8.6 oz
Power switch	Rotary switch
Mounting	Sauer 404



The Sauer 404 mount for the Micro series can be quickly mounted and dismounted without any influence on settings or accuracy. The Aimpoint® Micro H-2 2MOA and the Sauer 404 Mount for the Micro series are sold as a complete kit only.

MICRO H-1™

Item No	• 200018 (2 MOA) • 11910 (4 MOA)
Dot size	2 MOA / 4 MOA
Battery life	50 000 h
Battery type	CR2032 (3 V)
Weight (incl. mount)	114 g / 4.0 oz
Power switch	Rotary switch
Mounting	Picatinny/Weaver



The Aimpoint® Micro H-1 was designed with the hunter in mind. This was the first generation sight in the popular Aimpoint® Micro series.

MICRO S-1™

Item No	200369
Dot size	6 MOA
Battery life	50 000 h
Battery type	CR2032 (3 V)
Weight (incl. mount)	100 g / 3.5 oz
Power switch	Rotary switch
Mounting	Integrated mount for ventilated rib



Scan to watch



The Aimpoint® Micro S-1 was designed specifically for use on shotguns. It attaches directly to the shotgun at any point along the ventilated rib. Interchangeable adapter plates are included to accommodate most popular shotgun rib sizes. It provides a compact, low-profile optic for shotgun hunters. The big, bright 6 MOA red dot provides an optimal combination of target acquisition speed and visibility. The Micro S-1 greatly enhances hit percentage for hunters, as well as on the sporting clays course.





Scan to watch



HUNTER™ SERIES SIGHTS

The Aimpoint® Hunter series offers an exceptional optical performance and incorporates the latest technology from Aimpoint. Its design is similar to a traditional magnifying scope and is appreciated by many hunters. The Hunter series is available in 4 different versions. The length of the action of your rifle will determine if you need a long or short version. For an even better optical experience, the 34 mm versions would be the sight we recommend.

H34L™

Item No	12693
Dot size	2 MOA
Battery life	50 000 h
Battery type	CR2032 (3 V)
Tube diameter	34 mm
Weight (excl. mount)	280 g / 9.9 oz
Power switch	Push buttons
Mounting	2 Rings (Ø34 mm) Not included



This sight has a 34 mm tube diameter for an exceptional optical performance. Due to its length, we recommend this sight primarily for use on rifles with standard or magnum actions, plus to any hunter who desires the classic lines of a full length sight.

H34S™

Item No	12692
Dot size	2 MOA
Battery life	50 000 h
Battery type	CR2032 (3 V)
Tube diameter	34 mm
Weight (excl. mount)	268 g / 9.5 oz
Power switch	Push buttons
Mounting	2 Rings (Ø34 mm) Not included



This sight has a 34 mm tube diameter for an exceptional optical performance. Due to its length, we recommend this sight for use on standard or short action rifles, as well as semi-automatic rifles, combination rifles and drilling.

Accessories & mounts info on page 17-20.
More tech details on page 22-24.

H30S™

Item No	12690
Dot size	2 MOA
Battery life	50 000 h
Battery type	CR2032 (3 V)
Tube diameter	30 mm
Weight (excl. mount)	235 g / 8.3 oz
Power switch	Push buttons
Mounting	2 Rings (Ø30 mm) Not included



This sight has a 30 mm tube diameter, which offers a large choice of mounting rings. Due to its length, we recommend this sight for use on standard or short action rifles, as well as semi-automatic rifles, combination rifles and drilling.

H30L™

Item No	12691
Dot size	2 MOA
Battery life	50 000 h
Battery type	CR2032 (3 V)
Tube diameter	30 mm
Weight (excl. mount)	247 g / 8.7 oz
Power switch	Push buttons
Mounting	2 Rings (Ø30 mm) Not included



This sight has a 30 mm tube diameter, which offers a wide choice of mounting rings. Due to its length, we recommend this sight primarily for use on rifles with standard or magnum actions, plus to any hunter who desires the classic lines of a full length sight.



9000™ SERIES SIGHTS

Since the introduction, market response to Aimpoint 9000 series sights has been very positive. The 9000 series' ability to offer a combination of a high quality optic at an affordable price has kept this sight in high demand. The 9000 series is available in three different versions. The length of the action of your rifle will determine if you need a long or short version.

9000L™

Item No	• 11419 (2 MOA) • 11406 (4 MOA)
Dot size	2 MOA / 4 MOA
Battery life	50 000 h
Battery type	DL1/3N (3 V)
Tube diameter	30 mm
Weight (excl. mount)	227 g / 8.0 oz
Power switch	Rotary switch
Mounting	2 Rings (Ø30 mm) Not included



This is the most popular sight within the 9000 series due to its long length. It makes it ideal for use primarily on rifles with standard or magnum actions.

9000SC™

Item No	• 11417 (2 MOA) • 11407 (4 MOA)
Dot size	2 MOA / 4 MOA
Battery life	50 000 h
Battery type	DL1/3N (3 V)
Tube diameter	30 mm
Weight (excl. mount)	206 g / 7.3 oz
Power Switch	Rotary Switch
Mounting	2 Rings (Ø30 mm) Not included



This is the short version of the series which is for use on standard or short action rifles, as well as semi-automatic rifles, combination rifles and drilling.

9000SC-NV™

Item No	200136
Dot size	2 MOA
Battery life	50 000 h
Battery type	DL1/3N (3 V)
Tube diameter	30 mm
Weight (excl. mount)	206 g / 7.3 oz
Power switch	Rotary switch
Mounting	2 Rings (Ø30 mm) Not included
Night vision compatible	Yes



This is the same sight as the 9000SC, but it is compatible with night vision devices (NVD). The first four intensity settings are for use with a night vision device. This means that the dot is not visible for the naked eye. Through the night vision equipment, the red dot becomes white and can be used as usual.



COMPC3™

The Aimpoint® CompC3 is designed to be used whenever you need a compact sight with a 30 mm tube diameter. This sight belongs to the Comp series, a very popular series of sights for the professional market. The CompC3 is a civilian sight mostly used on scout rifles, bows, carbines and competition pistols.

COMPC3™

Item No	11421
Dot size	2 MOA
Battery life	50 000 h
Battery type	DL1/3N (3 V)
Tube diameter	30 mm
Weight (incl. mount)	259 g / 9.1 oz
Power switch	Rotary switch
Mounting	Picatinny/Weaver



Weaver/Picatinny ring included.

COMPC3™

WITH MOUNT FOR SEMI-AUTOMATIC RIFLES

Item No	200245
Dot size	2 MOA
Battery life	50 000 h
Battery type	DL1/3N (3 V)
Tube diameter	30 mm
Weight (incl. mount)	280 g / 9.9 oz
Power Switch	Rotary Switch
Mounting	<ul style="list-style-type: none"> • Browning Bar/Maral/BLR • Winchester STX • Benelli ARGO



Scan to watch



The CompC3™ mount for semi-automatic rifles (Browning Bar/Maral/BLR, Winchester STX, Benelli ARGO) is attached directly to the action. The Aimpoint® CompC3 2MOA and the CompC3 mount for semi-automatic rifles are sold as a kit. The mount can also be bought separately.

Accessories & mounts info on page 17-20.
More tech details on page 22-24.



3X-C™

The Aimpoint® 3X-C is optimized for the Micro™ series, for long-range aiming or observation. A variable (-2 to +2) dioptic setting allows this magnifier to be adapted to the individual shooter's eye. The 3X-C can also be used as a handheld 3X monocular. It is mounted behind the sight and utilizes the red dot in Aimpoint sights as the aiming reticle, eliminating the need for re-zeroing when shifting between non-magnified and magnified aiming.

3X-C™

Item No	200273
Magnification	3x
Field of view	6°
Length	103 mm / 4.1 in
Weight (excl. mount)	220 g / 7.8 oz



In order to mount the 3X-C you need: FlipMount and TwistMount base to be mounted on a Picatinny rail. To get the same optical axis as the magnifier you need a 30 or 39mm spacer for the Micro sight.



See page 19 for more details about the FlipMount and the TwistMount.

Accessories & mounts info on page 17-20.
More tech details on page 22-24.

ACCESSORIES



Bikini Lens Cover
For 9000 & CompC3 sights,
Item No. 10628
For H30L & H30S sights,
Item No. 12663
For H34L & H34S sights,
Item No. 12664



Flip-up Front Cover
For CompC3 &
9000 sights
Item No. 12223



Flip-Up Rear Cover
For CompC3 &
9000 sights
Item No. 12224



Flip-up Front Cover
Transparent
For CompC3 &
9000 sights
Item No. 12241



Flip-up Rear Cover
Transparent
For CompC3 &
9000 sights
Item No. 12240



Rubber Bikini Lens Cover
For Micro sights
Item No. 12204



Flip-up Front Cover
For Micro H-2 sights
Item No. 200191



Flip-up Front Cover
Transparent
For Micro H-2 sights
Item No. 200192



Flip-up Rear Cover
Transparent
For Micro H-2 sights
Item No. 200193



Flip-up Front Cover
Transparent
For H30 sights
Item No. 200353



Flip-up Rear Cover
Transparent
For H30 sights
Item No. 200354



Flip-up Front Cover
Transparent
For H34 sights
Item No. 200355



Flip-up Rear Cover
Transparent
For H34 sights
Item No. 200356



Aimpoint® Tool
For Micro &
Hunter sights
Item No. 12207



DL1/3N
Lithium Battery 10 pcs
For CompC3 &
9000 sights
Item No. 10903



CR 2032
Lithiumbattery
For Micro &
Hunter sights
Item No 12211



CR 1225
Lithiumbattery
For Acro
Item No 13851

MOUNTING SOLUTIONS



30 mm Rings
Black, one pair.
For 9000 &
Hunter sights.
Item No. 12229*



SRW-L Ring
Low Wide Ring 30 mm black.
For CompC3 sights. Fits on
Weaver rail.
Item No. 12244*



Mount Adapter 30 mm
For magnifying scopes
with 30 mm tube.
Item No. 200152*



WH 34 mm Rings
Black, one pair.
For H34S and H34L.
Fits on Weaver and
Picatinny rails.
Item No. 200087*



LQR 34 mm Rings
Black, one pair. For H34S
and H34L. Fits on
Leupold Quick Release
bases.
Item No. 12910*



Mount Adapter 34 mm
For magnifying scopes
with 34 mm tube.
Item No. 200153*



Micro LRP Mount Kit
To convert Micro Mount
to Lever Release Pica-
tinny.
Item No. 12184



**Micro 11 mm
Dovetail Mount**
Fits most of the 11 mm
Dovetail bases ranging
from 10-12.5 mm.
Item No. 12215**



**Micro LRP Mount
Lever Release
Picatinny for Micro sights.**
Returns to zero after dis-
mounting. Thread sealer
included.
Item No. 12905***



Micro Spacer 39 mm
For Micro sights. Raises
height of optical axis to 39
mm for co-witness with
AR-15.
Item No. 12358***



Micro Spacer 30 mm
For Micro sights.
Raises height of
optical axis to 30 mm.
Item No. 12357***



Micro Mount Kit
For Ruger 10/22.
Item No. 12466**

* Screws and Allen key included
** Screws and Aimpoint Tool included
*** Screws, Aimpoint Tool and Thread Sealer included



Micro H-1 Drilling Mount
Fits most of the Merkel drillings.

Item No. 12200**



Micro H-1 Safari Mount
Fits most of the Merkel Double Rifles.

Item No. 12201**



Micro H-1 Mount
Fits Krieghoff and Merkel drillings.

Item No. 12844**



Micro Mount for Leupold QR Base

Mount suitable for all Leupold QR bases with two anchor points.

Item No. 200224



Micro Mount for Tikka T3

Low rail mount for Tikka T3, with two attachment points.

Item No. 200225



Micro Mount

Mount for the most common semi-automatic rifles (Browning Bar/Maral/BLR, Winchester STX, Benelli ARGO).

Item No. 200257



Micro Mount

Mount for semi-automatic shotguns. Attached on the shotgun with dovetail (11.0-13.0 mm).

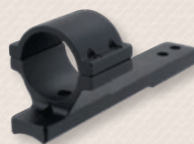
Item No. 200258



CompC3 Mount

Mount for semi-automatic shotguns. Attached on the shotgun with dovetail (11.0-13.0 mm).

Item No. 200256



CompC3 Mount

Mount for the most common semi-automatic rifles (Browning Bar/Maral/BLR, Winchester STX, Benelli ARGO).

Item No. 200255



FlipMount Ring incl. TwistMount Base

A quick attach/detach mount that can be quickly flipped in or out of the optical axis. For Aimpoint magnifiers.

Item No. 200250
(30 mm height of optical axis)

Item No. 200251
(39 mm height of optical axis)



FlipMount Ring

Separate ring for TwistMount base.

Item No. 200248
(30 mm height of optical axis)

Item No. 200249
(39 mm height of optical axis)



TwistMount Base

Separate base for FlipMount ring. Fits on Picatinny rail (MIL-STD 1913).

Item No. 12236

MOUNTING SOLUTIONS FOR ACRO C-1™



Acro QD Mount 22 mm
Quick Detachable Mount for Acro sights. Raises height of optical axis to 22 mm. Fits on Weaver and Picatinny rail.

Item No. 200517



Acro QD Mount 30 mm
Quick Detachable Mount for Acro sights. Raises height of optical axis to 30 mm. Fits on Weaver and Picatinny rail.

Item No. 200518



Acro QD Mount 39 mm
Quick Detachable Mount for Acro sights. Raises height of optical axis to 39 mm. Fits on Weaver and Picatinny rail.

Item No. 200519

NEW!



Acro Adapter Plate for RMR Interface
For mounting Acro sights on RMR interface.

Item No. 200602

NEW!



Acro Rear Sight Adapter Plate for Glock
For mounting Acro sights on Glock handguns without the optic ready system.

Item No. 200622

NEW!



Acro Rear Sight Adapter Plate for Beretta APX
For mounting Acro sights on Beretta APX handguns without the optic ready system.

Item No. 200614

NEW!

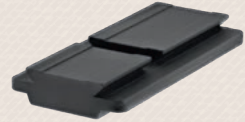
Acro Rear Sight Adapter Plate for CZ
For mounting Acro sights on CZ Shadow 1, 2 and CZ P10 handguns without the optic ready system.

Item No. 200663

NEW!

Acro Fixed Mount 22 mm
Fixed mount for Acro sights. Raises the optical axis to 22 mm. Fits Weaver/Picatinny rails.

Item No. 200666



Acro Adapter Plate for Micro Interface
Allows compatibility with all Micro sights mounting solutions.

Item No. 200526

Additional Acro adapter plates available for optic ready handguns only:

Acro Adapter Plate Glock MOS

For mounting Acro sights on optic ready Glock MOS handguns. Item No. 200520

Acro Adapter Plate for HK SFP9

For mounting Acro sights on optic ready HK SFP handguns. Item No. 200521

Acro Adapter Plate for CZ P-10

For mounting Acro sights on optic ready CZ P-10 handguns. Item No. 200522

Acro Adapter Plate S&W M&P9

For mounting Acro sights on optic ready Smith & Wesson M&P9 handguns. Item No. 200523

Acro Adapter Plate Beretta APX

For mounting Acro sights on optic ready Beretta APX handguns, Item No. 200524

Acro Adapter Plate Sig Sauer P320/M17

For mounting Acro sights on optic ready Sig Sauer P320/M17 handguns, Item No. 200525

Acro Adapter Plate Sig Sauer X5

For mounting Acro sights on optic ready Sig Sauer X5 handguns, Item No. 200576

Acro Adapter Plate CZ Shadow 2 QR

For mounting Acro sights on optic ready CZ Shadow 2 OR handguns, Item No. 200577

Acro Adapter Plate Walther QR Match

For mounting Acro sights on optic ready Walther QR Match handguns, Item No. 200578

Acro Adapter Plate FNX-45 Tactical

For mounting Acro sights on optic ready FNX-45 Tactical handguns, Item No. 200579

Acro Adapter Plate Silencerco Maxim 9

For mounting Acro sights on optic ready Silencerco Maxim 9 handguns, Item No. 200580

New plates will come, for updated information please see www.aimpoint.com

THE RED DOT EXPLAINED

Aimpoint red dot sights are designed for the user to easily adjust the intensity of the red dot to accommodate different lighting conditions, from dusk till dawn. Adjusting the intensity can result in an apparent change of the size of the red dot. Some shooters prefer to increase the intensity of the red dot in a situation where fast moving targets require extremely fast target acquisition. Similarly, decreasing the intensity can make the red dot appear smaller and provide better precision for longer shots.

2 MOA

The small dot does not obscure the target, even if the target is compact and far away. If necessary, you can increase the intensity to over expose the dot, making it look little bit bigger.

4 MOA

The 4 MOA red dot offers a perfect balance between the ability for close-up shots as well as engaging targets at a distance with maintained precision. The 4 MOA red dot could also be a solution if you have difficulties with seeing the smaller 2 MOA dot as round.

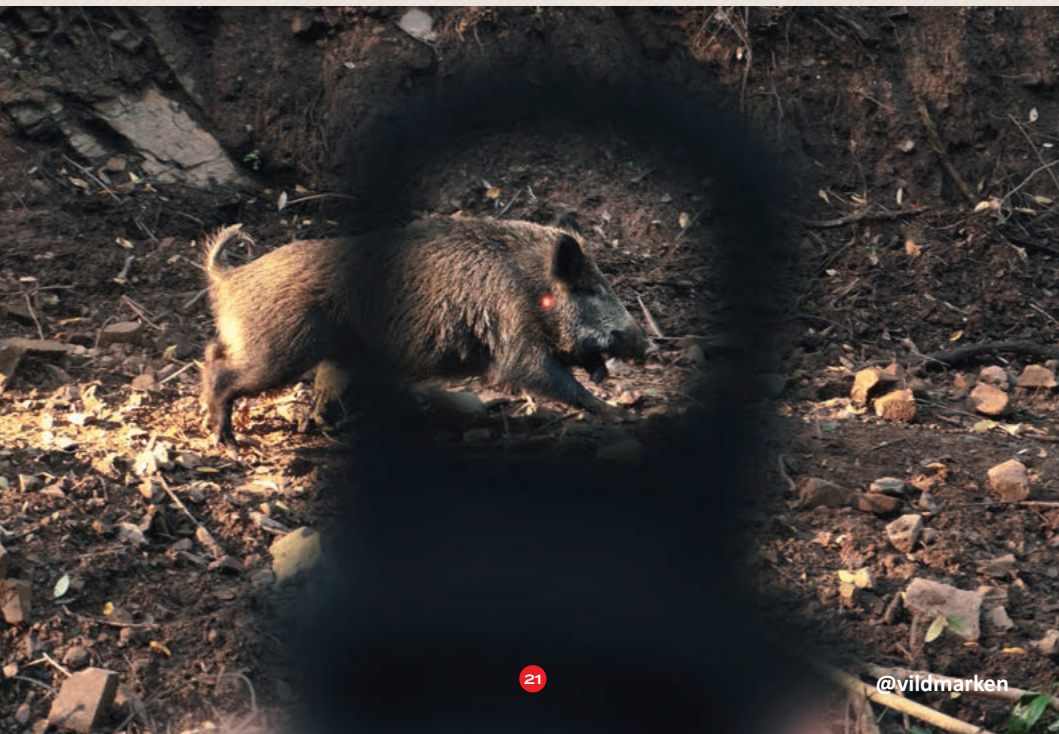
6 MOA

For close and fast moving targets where the shooter might only get a split second to line up a shot, the 6 MOA dot is the optimal choice. The dot is big, bright, and easy to find encouraging fast target acquisition every time. Perfect for IPSC disciplines, dog handlers, etc.

HOW MUCH DOES THE RED DOT COVER AT CERTAIN DISTANCES?

1 MOA \approx 3 cm at 100 meters.

DOT SIZE	5 M	15 M	25 M	50 M	100 M
2 MOA	0,3 cm	0,9 cm	1,5 cm	3 cm	6 cm
4 MOA	0,6 cm	1,8 cm	3 cm	6 cm	12 cm
6 MOA	0,9 cm	2,7 cm	4,5 cm	9 cm	18 cm

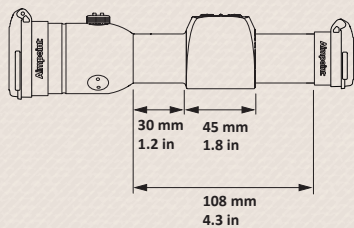


TECHNICAL SPECS

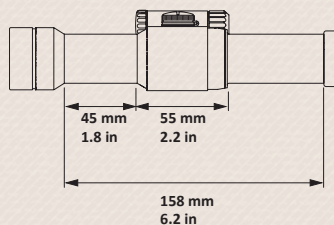
SPECIFICATION	ACRO C-1	MICRO H-2	MICRO H-1	MICRO S-1	H34L
Dot size	3.5 MOA	2 MOA / 4 MOA / 6 MOA	2 MOA/4 MOA	6 MOA	2 MOA
Battery life	More than 1.5 year of use at setting 6	50 000 h ^A	50 000 h ^A	50 000 h ^B	50 000 h ^B
Battery type	CR1225 (3 V)	CR2032 (3 V)	CR2032 (3 V)	CR2032 (3 V)	CR2032 (3 V)
Power switch	Push buttons	Rotary switch	Rotary switch	Rotary switch	Push buttons
Night Vision Device (NVD) settings	2	-	-	-	-
Daylight (DL) settings	8	12	12	12	12
Adjustment 1 click =	17 mm at 100 m 0.6 in at 100 yds	13 mm at 100 m 0.5 in at 100 yds	13 mm at 100 m 0.5 in at 100 yds	13 mm at 100 m 0.5 in at 100 yds	20 mm at 100 m 0.7 in at 100 yds
Size L x W x H (excl. mount)	47 x 30 x 30 mm 1.9 x 1.2 x 1.2 in	79 x 45 x 39 mm 3.1 x 1.6 x 1.4 in	61 x 41 x 36 mm 2.4 x 1.6 x 1.4 in	63 x 43 x 42 mm 2.5 x 1.7 x 1.7 in	240 x 60 x 60 mm 9.4 x 2.4 x 2.4 in
Weight (excl. mount)	60 g 2.1 oz	106 g 3.7 oz	84 g 3.0 oz	100 g 3.5 oz	280 g 9.9 oz

DISTANCE BETWEEN RINGS

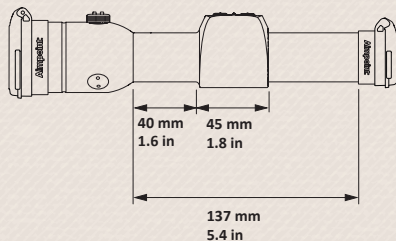
Aimpoint® Hunter series H34S and H30S



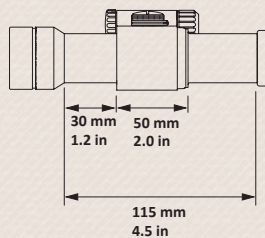
Aimpoint® 9000 series 9000L



Aimpoint® Hunter series H34L and H30L



Aimpoint® 9000 series 9000SC and 9000SC-NV



More technical details can be found on the Aimpoint website www.aimpoint.com

H30L	H34S	H30S	9000SC-NV/ 9000SC	9000L	COMPC3
2 MOA	2 MOA	2 MOA	<ul style="list-style-type: none"> • 9000SC-NV: 2 MOA • 9000SC: 2 MOA / 4 MOA 	2 MOA / 4 MOA	2 MOA
50 000 h ^B	50 000 h ^B	50 000 h ^B	50 000 h ^B	50 000 h ^B	50 000 h ^B
CR2032 (3 V)	CR2032 (3 V)	CR2032 (3 V)	DL1/3N (3 V)	DL1/3N (3 V)	DL1/3N (3 V)
Push buttons	Push buttons	Push buttons	Rotary switch	Rotary switch	Rotary switch
-	-	-	<ul style="list-style-type: none"> • 9000SC-NV: 4 • 9000SC: - 	-	-
12	12	12	<ul style="list-style-type: none"> • 9000SC-NV: 6 • 9000SC: 9 	9	9
20 mm at 100 m 0.7 in at 100 yds	20 mm at 100 m 0.7 in at 100 yds	20 mm at 100 m 0.7 in at 100 yds	16 mm at 100 m 0.6 in at 100 yds	12 mm at 100 m 0.4 in at 100 yds	16 mm at 100 m 0.6 in at 100 yds
240 × 55 × 55 mm 9.4 × 2.2 × 2.2 in	207 × 60 × 60 mm 8.1 × 2.4 × 2.4 in	207 × 55 × 55 mm 8.1 × 2.2 × 2.2 in	159 × 49 × 49 mm 6.3 × 1.9 × 1.9 in	200 × 49 × 49 mm 7.9 × 1.9 × 1.9 in	122 × 49 × 49 mm 4.8 × 1.9 × 1.9 in
247 g 8.7 oz	268 g 9.5 oz	235 g 8.3 oz	206 g 7.3 oz	227 g 8.0 oz	192 g 7.1 oz

BATTERY LIFE

A: 50 000 hours at daylight setting 8 (room temperature).

B: 50 000 hours at daylight setting 7 (room temperature).

DOT SIZE (MOA)

MOA (minute of angle) 1 MOA ≈ 30 mm at 100 meters ≈ 1 in at 100 yards.

WARRANTY INFORMATION

Aimpoint values your business and always attempts to provide you the very best of products and services. That's why we back our products with one of the best guarantees in the industry. Our products are guaranteed to be free from original manufacturer defects in material and/or workmanship under normal use from the date of purchase for ten (10) years for personal use and two (2) years for professional or competition use.

CUSTOMER SERVICE & DEALERSHIP ELIGIBILITY

For dealership eligibility and information about customer service, please scan the code or follow the link.



www.aimpoint.com/contact



www.aimpoint.com/products/where-to-buy

GENERAL TECHNICAL DATA

	Acro C-1	Micro S-1	Micro H-2	Micro H-1	Hunter H34L	Hunter H30L	Hunter H34S	Hunter H30S	9000SC-NV	9000SC	9000L	CompC3
APPLICATION AREAS												
Hunters	●	●	●	●	●	●	●	●	●	●	●	●
Action shooters	●	●	●	●	-	-	-	-	-	-	-	●
APPLICATION FIREARMS												
Pistol/revolver	●	-	○	○	-	-	○	○	○	○	-	●
Bow	●	-	○	○	-	-	-	-	-	-	-	●
Magnum handgun ¹	○	-	○	○	-	-	○	○	○	○	-	●
Semi-automatic rifle	●	-	●	●	○	○	●	●	●	●	○	●
Rifle - short action (bolt-action)	●	-	●	●	○	○	●	●	●	●	○	●
Rifle - long action (bolt-action)	●	-	●	●	●	●	-	-	-	-	●	○
Combination rifles/drilling	●	-	●	●	○	○	●	●	●	●	○	●
Shotgun OU ² /SA ³ /slug – ventilated rib	-	●	-	-	-	-	-	-	-	-	-	-
Shotgun OU ² /SA ³ /slug – dovetail	●	●	●	●	○	○	●	●	●	●	○	●
● primary use ○ secondary use - not recommended												
¹ If double anchor points are used the optics must be mounted using two heavy duty steel mounting rings and a solid one piece mounting base designed specifically for use with these revolvers. ² OU = Over and under ³ SA = Semi-automatic												

FEATURES FOR ALL AIMPOINT RED DOT SIGHTS

TECHNOLOGY

- ACET (Advanced Circuit Efficiency Technology)
- Working principle: Reflex collimator sight - red dot sight

OPTICAL DATA

- LED (Light Emitting Diode) totally eye-safe
- Light source wave length, 650 nm red light
- Parallax free – No centering required
- Unlimited eye relief
- Anti-reflex coating all surfaces & multi-layer coating objective lens
- No magnification (1X)

MECHANICAL DATA


- Material housing and tube, high strength aluminium
- Surface finish housing, anodized, semi-matte
- Black color housing

ENVIRONMENTAL DATA

- Temperature range: -30° to +60°C (-22° to +140°F)
- Fully waterproof
- No radioactive material used
- No laser emission

Specifications are subject to change without notice.

FOR SPEED, ACCURACY AND RELIABILITY

A person wearing an orange hunting jacket and cap is aiming a rifle. The rifle has an Aimpoint scope mounted on it, which is showing a red dot. The person's eyes are focused on the target, and they are holding the rifle with both hands. The background is a blurred forest scene.

In summary, Aimpoint's breakthrough technology allows you to do what comes naturally - shoot with both eyes open while remaining focused on the target. Instinctively place the red dot on the game, and you are ready to pull the trigger.

Get on target fast, and forget about being challenged by poor weather conditions, bad light, or moving targets. It is this inherent combination of simplicity, speed, accuracy, and reliability that makes Aimpoint® sights the preferred choice for beginners and experts alike.

Aimpoint®

Aimpoint AB

Jägershillgatan 15
SE- 213 75 Malmö, Sweden
Phone +46 (0)40 671 50 20
Fax +46 (0)40 21 92 38
E-mail: info@aimpoint.se

www.aimpoint.com



This catalog is available online in the following languages:
English, French, German, Swedish, Russian, Spanish, Turkish and Italian.

Available at: www.aimpoint.com/catalogs

THE FUTURE IN SIGHT™

Photographers: Thomas Nissen, Mikael Grennard, Robert Persson, John Hafner.
This printed material is for information purposes only and does not constitute any
binding obligation or agreement by Aimpoint AB
All rights reserved. ©2020 Aimpoint AB. Art. No. M03284