



LEUPOLD

SUMMER 2020



BE RELENTLESS





FREEDOM LINE

FULLDRAW 4

BEHIND
THE CORE

BOW KIT

DP PRO
NIGHT VISION

DIALING FOR
DISTANCE

BINO
BREAKDOWN

PERFORMANCE
EYEWEAR

FIELD TO TABLE

PRO GEAR

SCOPE FINDER

LIFETIME
GUARANTEE

RELENTLESS PERFORMANCE

Performance.
It's always been about performance.

We've built our reputation as the world's dominant optics manufacturer by focusing on performance. You can't guarantee performance like we do if you don't build the product yourself.

Manufacturing is the backbone of America, and our teammates take pride in being a part of that. We are a family of hard-working Americans who are competitive, driven, and proud. But above all else, we are committed to upholding the legacy of quality and craftsmanship that is expected of true American Manufacturing. We believe in outperforming everyone, even ourselves, and we are relentless in our pursuit.

Thank you for your trust, and thank you for your support.

BRUCE PETTET
PRESIDENT & CEO
LEUPOLD & STEVENS, INC.





FREEDOM LINE

FULLDRAW 4

BEHIND THE CORE

BOW KIT

DP PRO NIGHT VISION

DIALING FOR DISTANCE

BINO BREAKDOWN

PERFORMANCE EYEWEAR

FIELD TO TABLE

PRO GEAR

SCOPE FINDER

LIFETIME GUARANTEE

★★★ THE **FREEDOM** TO CHOOSE



Our award-winning line of VX-Freedom riflescopes deliver more versatility than any other scope line in their class. Whether you need an illuminated optic with a custom dial for your hunting rifle, a rugged and reliable riflescope to throw on top of your varmint gun, or an AR-specific scope that's precalibrated and ready to rock right out of the box - Leupold has you covered.

No matter what model you choose or what features you need it to deliver, you'll never find a sporting optic more rugged, lightweight, or clear than a Leupold.





FREEDOM LINE

FULLDRAW 4

BEHIND
THE CORE

BOW KIT

DP PRO
NIGHT VISION

DIALING FOR
DISTANCE

BINO
BREAKDOWN

PERFORMANCE
EYEWEAR

FIELD TO TABLE

PRO GEAR

SCOPE FINDER

LIFETIME
GUARANTEE

THE FREEDOM LINE

With a scope for every possible application, hunters and shooters have the freedom to put a Leupold on any rifle they own.

1 VX-FREEDOM 3-9X40 FIREDOT 30MM

The 3-9 model provides the ideal magnification range for most shots, while its 30mm maintube gives you ample adjustment when you need it. Plus, FireDot illumination gives you a bright, intuitive aiming point that won't get lost in low-light conditions.

2 VX-FREEDOM RIMFIRE 2-7X33 1-INCH

Spending the day plinking with your favorite rimfire rifle and a group of friends may be the true American pastime (sorry baseball). Our VX-Freedom Rimfire models provide a closer 60-yard focus distance and a Rimfire MOA reticle to keep that smile on your face, shot after shot.

3 VX-FREEDOM MUZZLELOADER 3-9X40 1-INCH

Every shot counts, but when it comes to a muzzleloader your first one needs to be on because there's rarely going to be a second. With a Sabot Ballistics reticle designed specifically for muzzleloaders and shotguns, you'll have a clear image and accurate aiming points out to 300 yards. No more guessing games with holdover, and more meat for the freezer.

4 VX-FREEDOM AR 1.5-4X20 FIREDOT 30MM

All VX-Freedom AR models offer a host of features for tactical shooters. Complete with MIL-based adjustments and reticles, exposed elevation adjustment dial, and a low-profile power sector ring, this scope delivers everything you need to get the most out of your .223/5.56 or .308. The 1.5-4 model provides a wide field-of-view, while also allowing for precise, mid-range shots.

5 VX-FREEDOM AR 6-18X40 30MM

This scope comes with a host of features you would expect in a more expensive scope, like a 30mm maintube, exposed elevation adjustment dial, and 18x. Turn up the power to deliver precise shots at long distances or back off when you need a wider field-of-view.





EVERY YARD COUNTS



FREEDOM LINE

FULLDRAW 4

BEHIND THE CORE

BOW KIT

DP PRO NIGHT VISION

DIALING FOR DISTANCE

BINO BREAKDOWN

PERFORMANCE EYEWEAR

FIELD TO TABLE

PRO GEAR

SCOPE FINDER

LIFETIME GUARANTEE

RX-FULLDRAW 4

Modern archers know that angle-compensated ranges can mean the difference between a hit and a miss. But what if we told you that in many scenarios, using a rangefinder that also offers ballistics for your bow setup is even more important?

Don't fall into the trap of dismissing what you don't know. Whether you're in the field or at a tournament, the new RX-FullDraw 4 can take the guesswork out of your most challenging shots. Because when you're performing at the highest level, every yard counts.

ARCHERS ADVANTAGE SOFTWARE

The RX-FullDraw 4 uses Archer's Advantage software to meet the needs of 3D tournament shooters, long-range hunters, or anyone else who needs to make accurate close-range shots at extreme angles. Mule deer and goat hunters, we're looking at you.

Ballistic calculations for archery may sound complicated, but it's simpler than you think. Just input your arrow weight, arrow velocity, and peep height, and the RX-FullDraw 4 will calculate extremely accurate ballistic solutions for high-angle short-distance shots and medium-angle long-distance shots.

FLIGHTPATH TECHNOLOGY

Most archers won't release their arrow without a clear shot. It only takes a twig to deflect your arrow and miss the target or worse, wound an animal. But, the RX-FullDraw 4 will eliminate any doubt. Using your ballistics, Flightpath calculates your arrow's maximum height of travel so you can determine if your arrow will clear obstructions between you and the target.

When you range a target, an illuminated mark will appear in the display indicating your arrow's maximum height of travel. If the obstruction, like a branch, is above the illuminated mark, then you know your arrow will fly under it. This information can help you save a lot of arrows. But we don't stop there.

An arrow reaches its highest point of travel when it's halfway to the target. If you shoot a target at 100 yards, then your arrow reaches its highest point at 50 yards. Therefore, at 25 yards, your arrow will reach half of its maximum height, and the same is true at 75 yards. Using this concept, you can determine if your arrow will go over or under almost any obstacle at any distance.



FREEDOM LINE

FULLDRAW 4

BEHIND
THE CORE

BOW KIT

DP PRO
NIGHT VISION

DIALING FOR
DISTANCE

BINO
BREAKDOWN

PERFORMANCE
EYEWEAR

FIELD TO TABLE

PRO GEAR

SCOPE FINDER

LIFETIME
GUARANTEE

BEHIND THE CORE

WITH

ARON SNYDER

The Leupold Core is made up of relentless hunters and shooters passionate about the outdoors. But when it comes to being relentless as a character trait, there is one person who stands out among the rest – meet Aron Snyder.

At home in the woods since childhood, Aron was destined for a career in the outdoors.

One more mile, one more ridgeline, one more stalk: No matter what it's taken to reach his goals, Aron Snyder has never quit. That dedication has helped him become one of the most well-known bowhunters in the country and an innovator in his own right. A longtime hunter and outdoorsman, Snyder entered the outdoor industry when he co-founded the ROKSLIDE, an online forum for western hunters. Hungry for a new challenge, he joined Kifaru in 2012 and has led the charge in developing innovative packs and other accessories that diehard hunters won't go without. Now the president of Kifaru International, Snyder continues to lead by example in his pursuit of both adventure and the highest performance possible.

We caught up with Aron to learn more about the man and what feeds his drive.





FREEDOM LINE

FULLDRAW 4

BEHIND THE CORE

BOW KIT

DP PRO NIGHT VISION

DIALING FOR DISTANCE

BINO BREAKDOWN

PERFORMANCE EYEWEAR

FIELD TO TABLE

PRO GEAR

SCOPE FINDER

LIFETIME GUARANTEE

What sparked your addiction to backcountry hunting?

I joined a trail crew in high school, and we would clean up trails during the summer months. We hiked all over the Jefferson Wilderness in the central Cascades of Oregon. That experience kicked everything off. I was hooked.

How do you spend your time when you're not hunting?

When I'm not hunting, I'm preparing for hunting. Whether I'm shooting or conditioning, I consume myself with the hunt, and I spend most of the off-season preparing for it.

We know shooting is a big part of your preparation, but what does your conditioning look like during the off-season?

My training focuses on being mountain fit, which to me simply means being fit for the mountains. You don't need a lot of muscle to be mountain fit. Muscles take oxygen, so the more muscle you have, the more oxygen you need, and at 13,000 feet, there ain't a whole lot of that going around. To be mountain fit, you just need cardio, core strength, and leg strength. But leg strength doesn't mean you can squat 700lbs; it means you can carry your backpack as much as you need to for as many miles as you need to.

For cardio, my mindset is simple: throw on a weighted pack (40-60lbs), go outside, and mimic hunting as much as you possibly can. There are no rules, go fast, go slow, hike easy terrain one day and challenging terrain the next, increase pack weight and decrease speed, or spend a full day climbing hills. Do that five times a week, and you'll be ready opening day.

You wear many hats on a day-to-day basis, but with such a busy schedule, how do you make time for daily workouts?

It's easy to use a busy schedule as an excuse to not workout, but for me there is nothing more important than maintaining a strong core so I find ways to fit it in. During a typical day at the office, I will get in about 50 pull ups, and at least 4 sets of 25 air squats and push-ups in between conference calls or meetings. During the winter months, I go snowshoeing after work. I'll go anywhere between 1.5-4 miles round trip, depending on the terrain.

You've hunted many game animals, but what's your favorite to hunt with a bow?

It's a tie between mule deer and mountain goat. I love the thrill of hunting above the tree line and sneaking within feet of a bedded animal.

What do most people overlook when preparing for a hunt?

Learning the behavior of the animals you hunt and survival skills, like field craft, woodsmanship, and land navigation.

If you didn't hunt, what activity would you take part in more?

Photography. I started my outdoor career as a photographer, and it's still a passion to this day.

What motivates you about your public role as a hunter and outdoorsman?

Being able to help and encourage people is a big motivator for me. Helping people has always been important to me, and I've been able to accomplish that through my public role in the outdoor industry.

What is the most challenging shot you've taken with a traditional bow?

The most challenging shot would have to be the one I took in 2018 on a high-country mule deer hunt. I was just below 13,000 feet in elevation, and the buck was about 36 yards away, relatively far for a trad bow. The steep terrain made it difficult to find a position with a clear shot. I ended up letting one fly at a 43 angle. It was tough, but it was successful.

It's no secret you test a lot of gear, but is there anything you wouldn't go into the woods without?

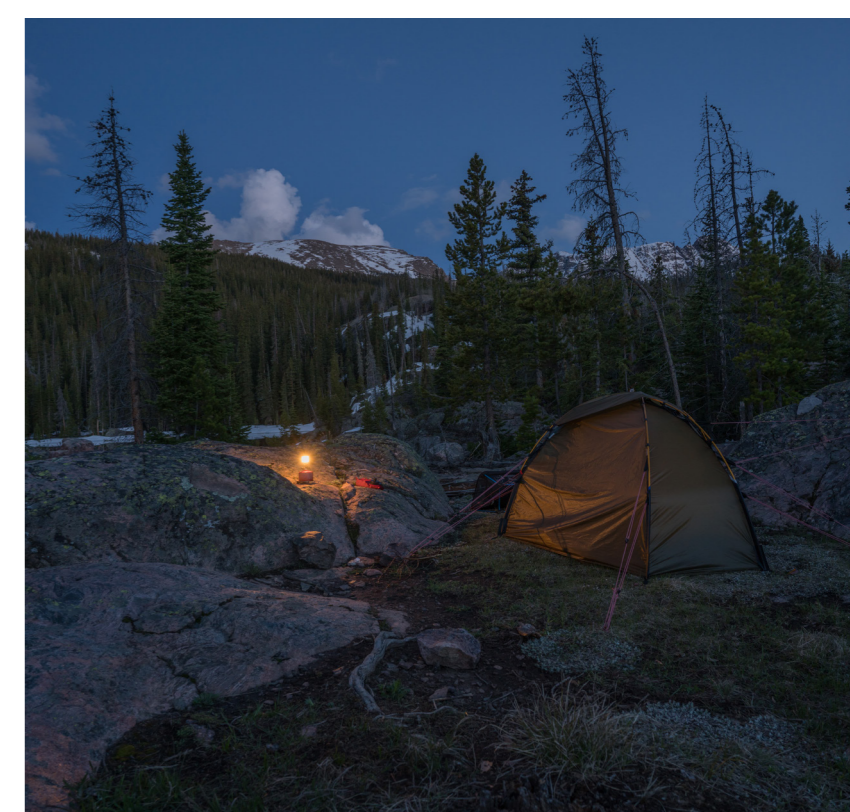
Success in the backcountry doesn't depend on having the best gear or being in peak physical shape, although those things do help. All a person needs in order to outperform and outlast everyone else on the mountain is heart. And maybe some Leuko tape, because that stuff is pretty amazing.

How would you like to be remembered 25 years from now?

As a person who motivated others with my actions, work ethic, and desire. And as someone who was always willing to help those in need.



Aron Snyder is an accomplished backcountry bowhunter, a podcast host for Kifarucast, and the president of Kifaru International.





FREEDOM LINE

FULLDRAW 4

BEHIND
THE CORE

BOW KIT

DP PRO
NIGHT VISION

DIALING FOR
DISTANCE

BINO
BREAKDOWN

PERFORMANCE
EYEWEAR

FIELD TO TABLE

PRO GEAR

SCOPE FINDER

LIFETIME
GUARANTEE

THE PERFECT BOW KIT

As you plan for this year's bowhunt, make sure you have the right gear for the job. From rugged, lightweight optics to a bow-specific rangefinder, Leupold has everything you need to outfit your next adventure.





THE PERFECT BOW KIT

FREEDOM LINE

FULLDRAW 4

BEHIND THE CORE

BOW KIT

DP PRO NIGHT VISION

DIALING FOR DISTANCE

BINO BREAKDOWN

PERFORMANCE EYEWEAR

FIELD TO TABLE

PRO GEAR

SCOPE FINDER

LIFETIME GUARANTEE



GOLD RING 15-30X50 COMPACT SPOTTING SCOPE

This spotter is a must have for any serious bowhunter. Its rugged carbon fiber body is so light, you'll forget it's in your pack. An oversized eyepiece provides all-day comfort so you can cover more ground without wearing out your feet.



LEUPOLD PERFORMANCE QUARTER-ZIP

The Performance Quarter-Zip provides lightweight comfort with just enough warmth for those early morning hunts. Its athletic fit and sleek design will keep up with your every move, from full draw to packing out.



FULLDRAW 4 RANGEFINDER

Built with the bowhunter in mind, the new RX-FullDraw 4 gives you the advantage you need to tag out every season. Using Archer's Advantage software, it calculates extremely accurate ballistic solutions based on your bow's velocity, peep height, and arrow weight.



BX-4 PRO GUIDE HD 10X42MM

The BX-4 Pro Guides provide archers with a low-profile optic and a wide field-of-view. Its compact size saves weight, while maintaining the elite optical performance Leupold lenses are known for.

PRO GUIDE BINOCULAR HARNESS

Keep your optics fully secured inside our new Pro Guide Binocular Harness. The soft fleece lining makes removing and replacing your binos silent and smooth, while a no-buckle magnet closure provides easy one-handed access without giving away your position.



PACKOUT PERFORMANCE EYEWEAR

Polarized, rugged, and extremely clear, the Packout is the go-to option for every archery hunter. Lightweight frames paired with our proven optical clarity make the Packout perfect for setting up camp or glassing at sunset.



FREEDOM LINE

FULLDRAW 4

BEHIND
THE CORE

BOW KIT

DP PRO
NIGHT VISION

DIALING FOR
DISTANCE

BINO
BREAKDOWN

PERFORMANCE
EYEWEAR

FIELD TO TABLE

PRO GEAR

SCOPE FINDER

LIFETIME
GUARANTEE

NIGHT & DAY

DIFFERENCE



The DeltaPoint Pro has dominated the competition from the start. But we knew it had the potential to do more, so we continued to innovate. In 2020, we introduced a new model to the DeltaPoint Pro line, adding even more features to an already versatile red dot sight.





FREEDOM LINE

FULLDRAW 4

BEHIND
THE CORE

BOW KIT

DP PRO
NIGHT VISION

DIALING FOR
DISTANCE

BINO
BREAKDOWN

PERFORMANCE
EYEWEAR

FIELD TO TABLE

PRO GEAR

SCOPE FINDER

LIFETIME
GUARANTEE

NEXT GENERATION RED DOT

Relentless performance requires that we constantly push our products to their limit and find what works, what doesn't, and what you need to be successful in the field. So we pushed past the limits of modern red dots and developed a sight that supports the most advanced technologies on the market today.

PROVEN RELIABILITY. MORE PERFORMANCE.

Meet the DeltaPoint Pro NV. An renowned reflex sight with improved night vision compatibility, a new adjustable brightness setting, and a sleek tactical finish.

- **Night Vision Settings**
To keep pace with the evolution of technology, we improved the night vision capability of our original red dot sight to support modern white phosphor equipment. The DeltaPoint Pro NV features two new night vision settings that are adjustable, allowing shooters to fine tune their red dot to match the sensitivity of their night vision equipment.
- **Brightness Adjustment Setting**
When match conditions are bright, you need a red dot that's even brighter. Now, shooters can max out their sights illumination or lower it to match their current conditions using the top brightness setting that adjusts the red dot's visibility to any level.
- **Flat Dark Earth**
Our popular red dot now comes in a sleek, flat dark earth finish that matches multiple major firearms platforms.



A RED DOT WITH A TRACK RECORD

The DeltaPoint Pro was born from Leupold's constant desire to innovate. We saw other companies making smaller red dots with issues and thought, "We can do better." So we did. Our red dot proves that you don't have to compromise on performance to make a reliable small red dot sight.

- **Image Quality**
The glass eliminates distortion and color variance, so you get a crystal-clear image with a crisp red dot at the center.
- **Field-of-View**
When you look through this sight, you'll notice the housing almost disappears, creating a wide-open field-of-view that opens up your peripherals.
- **Rugged Reliability**
Pistol recoil is no joke, so we built an impact simulation machine that ended up breaking the concrete floor it was anchored to. This little red dot held its own, test after test, with no issues.





FREEDOM LINE

FULLDRAW 4

BEHIND
THE CORE

BOW KIT

DP PRO
NIGHT VISION

DIALING FOR
DISTANCE

BINO
BREAKDOWN

PERFORMANCE
EYEWEAR

FIELD TO TABLE

PRO GEAR

SCOPE FINDER

LIFETIME
GUARANTEE

DIALING FOR

DISTANCE

To be accurate at long distances, not just any scope will do. You need a system that's specifically designed to deliver the highest degree of precision, quality, and performance. Leupold's line of long-range riflescopes are built to max out the capabilities of the latest long-range rifles and ammo, here's how.





FREEDOM LINE

FULLDRAW 4

BEHIND
THE CORE

BOW KIT

DP PRO
NIGHT VISION

DIALING FOR
DISTANCE

BINO
BREAKDOWN

PERFORMANCE
EYEWEAR

FIELD TO TABLE

PRO GEAR

SCOPE FINDER

LIFETIME
GUARANTEE

THE HEART OF A SCOPE

Today, shooters and hunters alike are pushing the limits of their gear. They're dialing out to distances that used to seem improbable, and they're doing it with relative ease. But this type of precision doesn't just happen by accident. Not only do you need the shooting knowledge and physical ability to deliver long-range hits, you need a rifle, ammo, and a scope that are precise and repeatable.

Manufacturing tolerances are a major key to this success. The slightest error in the design can create a giant deviation at 1000 yards. And while many shooters will tout their shooting system as being the best, few know exactly what goes into making these tools so exact.

So what makes a scope capable of shooting out past 1000 yards with precision? Let's take a look.

THE ERECTOR SYSTEM

Located inside your scope's maintube is a mechanical system that controls point of impact, creates magnification, and houses the reticle. When you turn the adjustment dial, this "erector system" tilts up and down, and right to left inside the scope, which, in turn, moves the reticle and ultimately changes your point of impact. Each simple click accounts for a precise .0002 inch of movement. That's roughly 1/20th the width of a human hair. Making sure these tiny adjustments in the erector system are precise and repeatable is key to long-range accuracy.

Since the erector system is made up of moving parts, it's vital that the design is as rugged as it is precise. Not only do you want each click to work exactly the same every time, you want to make sure it's unaffected by recoil, no matter what rifle it's mounted on.

When you break down the components of any successful long-range optical system, the following factors matter most:

- 1 A precise erector system**
- 2 A spacious maintube**
- 3 A dial specifically designed for repeatable long-distance shooting**





FREEDOM LINE

FULLDRAW 4

BEHIND THE CORE

BOW KIT

DP PRO NIGHT VISION

DIALING FOR DISTANCE

BINO BREAKDOWN

PERFORMANCE EYEWEAR

FIELD TO TABLE

PRO GEAR

SCOPE FINDER

LIFETIME GUARANTEE

THE MAINTUBE

The erector system sits inside the maintube. The more space it has to move, the more adjustment travel you can account for. Simply put, the size of your scope's maintube does matter, and it will directly affect the distance you can dial to. The smaller the maintube, the less the erector system can tilt, thus, limiting your adjustment travel. A larger maintube provides more room, allowing you to max out your internal adjustments and shoot longer distances.

But an extremely precise erector system housed inside a spacious maintube is only part of the equation. The technology that brings it all together is a dial that gives you enough revolutions of travel to take advantage of the first two components.

THE DIAL

Dials come in all shapes and sizes and serve as the controls for your scope. The farther the shot, the more your dial needs to turn. But with all of that travel and all of those revolutions, it's easy to get lost. That's why adjustment dials designed specifically for multiple revolutions help shooters take full advantage of their long-range systems.

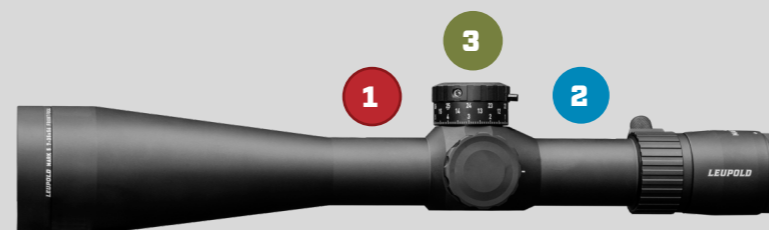
Dialing for Distance

Leupold has led the charge in designing 3-revolution dials, so shooters can send rounds downrange with confidence. We created a new generation of 3-revolution dials: the CDS-TZL3, M5C3, and M1C3 dial systems. These dials incorporate easy-to-read revolution indicators, solid zero-stops, and our proprietary push-button ZeroLock technology.

- **CDS-TZL3:** This system features an easy-to-read revolution indicator built into the base of the dial. As the dial turns, the indicator ring, which is marked with MOA increments, moves up and down and aligns with the static index mark on the outer collar.
- **M5C3/M1C3:** This dial's ZeroLock push-button acts as the indicator, providing both a visual and a tactile reference. During the first revolution the button protrudes from the dial. On the second revolution the dial sucks in flush with the face of the dial. Then on the third revolution the button recesses into the dial and a silver pin on top of the dial will pop up. These indicators are easy to see and feel without shifting position.

When you break down the components of any successful long-range optical system, the following factors matter most:

- 1 **A precise erector system**
- 2 **A spacious maintube**
- 3 **A dial specifically designed for repeatable long-distance shooting**



Zero-Stops

Being able to dial for extended ranges is great, but having the ability to quickly dial back down to your zero without counting clicks or look at the dial is a valuable feature. Both of our dial systems have solid zero stops to get you back on target quicker.

Zero Locks

Once you've dialed back down to zero, knowing that your dial won't move unless you want it to is one less thing you have to worry about. Our push-button ZeroLock technology physically locks the dial in place, preventing it from moving until you push the button.

So the next time you pick up your Leupold scope, don't just be amazed by its crystal-clear glass. Take a closer look at the engineering that went into making it the lightest and most precise piece of equipment in your shooting system. The attention to detail that goes into the smallest features is what makes our products stand above the rest and outperform the competition.





FREEDOM LINE

FULLDRAW 4

BEHIND
THE CORE

BOW KIT

DP PRO
NIGHT VISION

DIALING FOR
DISTANCE

BINO
BREAKDOWN

PERFORMANCE
EYEWEAR

FIELD TO TABLE

PRO GEAR

SCOPE FINDER

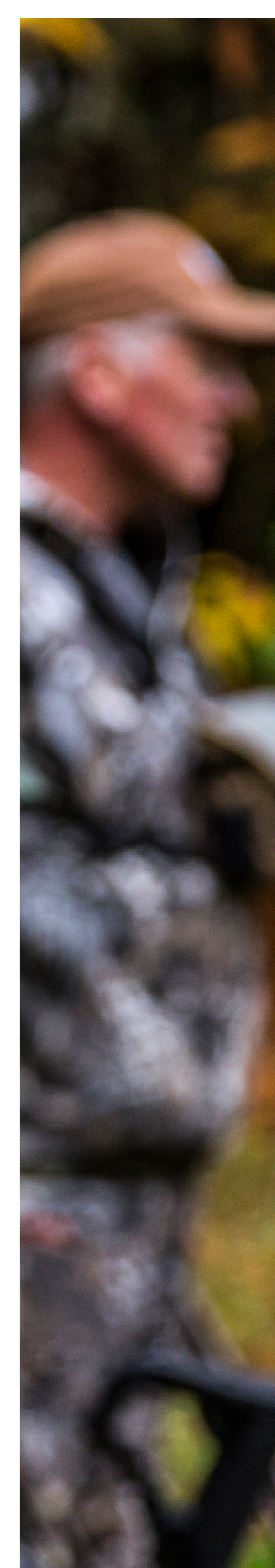
LIFETIME
GUARANTEE



UPGRADE YOUR GLASSES

Leupold binoculars are designed to help you see more in a variety of situations, but it can be hard knowing which binocular is right for you.

If you've ever wondered how to choose your next binocular, then this section will shed some light on the details that matter most for your hunting or shooting needs.





FREEDOM LINE

FULLDRAW 4

BEHIND THE CORE

BOW KIT

DP PRO NIGHT VISION

DIALING FOR DISTANCE

BINO BREAKDOWN

PERFORMANCE EYEWEAR

FIELD TO TABLE

PRO GEAR

SCOPE FINDER

LIFETIME GUARANTEE

STRENGTH OF MAGNIFICATION

Whether you're calling shots at the range or peering into thick cover from your treestand, it's important to use the right binocular for your specific application. Knowing how you plan to use your binocular most of the time will help determine what features will best meet your needs.

LOW-POWER

More magnification isn't always the answer. Sometimes the environment dictates that field-of-view is more important. A binocular with 6x to 8x provide an extra-wide field-of-view so no movement goes un-noticed, and no shot goes unseen.

BENEFITS

IDEAL FOR



MEDIUM-POWER

A quality 10x bino is hard to beat because it delivers enough magnification for long-range identification and a field-of-view that still gets the job done in tight situations.

BENEFITS

IDEAL FOR



HIGH-POWER

Optics with 12x to 15x allow you to see small targets at extreme distances. It's true, more magnification means more weight, but when mounted on a tripod, a high-power bino will easily close the distance on any target at any range.

BENEFITS

IDEAL FOR





BINOCULAR SERIES

Each binocular series builds upon the previous one to ensure that every Leupold product has the clearest, brightest image in its class. Here's how we break it down.



FREEDOM LINE

FULLDRAW 4

BEHIND THE CORE

BOW KIT

DP PRO NIGHT VISION

DIALING FOR DISTANCE

BINO BREAKDOWN

PERFORMANCE EYEWEAR

FIELD TO TABLE

PRO GEAR

SCOPE FINDER

LIFETIME GUARANTEE

GLASS AND GO

BX-1

The BX-1 series is perfect for the active hunter who logs more miles on their boots than moments behind their glass, and the competitive shooter who needs an optic for fast target identification before picking up their rifle and taking aim. The BX-1 series features our Twilight Light Management System, which delivers class-leading low-light performance and glare reduction.



EXTENDED VIEWING

BX-2

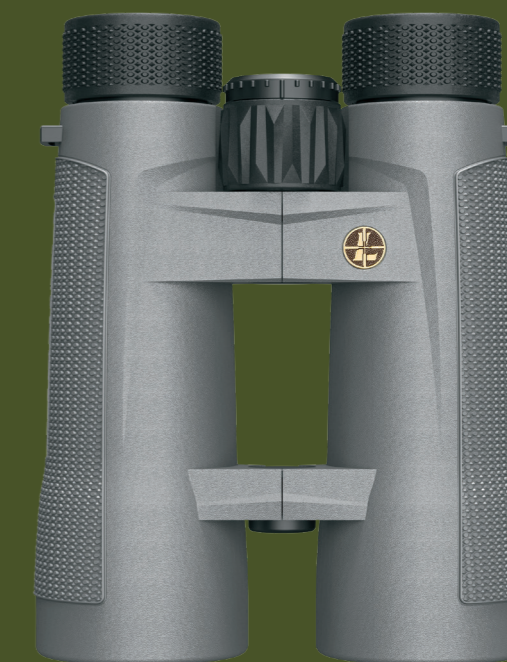
If you spend long periods behind your glass, then you will appreciate the comfort and clarity that comes with the BX-2 series. Perfect for the avid hunter who spends their day hiking and picking apart hillsides, and the shooter who is looking for a little extra definition. The BX-2 series features improved optical prescriptions that deliver a clearer, crisper image than the BX-1 series. And, with the Twilight Max Light Management System, you get excellent low-light performance.



DAWN TO DUSK

BX-4 & BX-5

The BX-4 and BX-5 series are designed for all-day glassing. We're talking about avid hunters, guides, and long-range shooters who demand edge-to-edge sharpness, brightness, and contrast from their binocular. We took extra steps to virtually eliminate glare and deliver true-to-life color using the Twilight Max HD Light Management System. While both series are HD, moving up to the BX-5 models will offer even more edge-to-edge resolution and clarity thanks to their advanced optical prescription.





FREEDOM LINE

FULLDRAW 4

BEHIND
THE CORE

BOW KIT

DP PRO
NIGHT VISION

DIALING FOR
DISTANCE

BINO
BREAKDOWN

PERFORMANCE
EYEWEAR

FIELD TO TABLE

PRO GEAR

SCOPE FINDER

LIFETIME
GUARANTEE



POLARIZED RUGGED CLEAR

In the field, at the range, or on the go, every pair of Leupold Performance Eyewear is built to outperform in the harshest conditions. Polarized, rugged, and extremely clear, your eyes will stay fresh no matter what.



PERFORMANCE EYEWEAR

POLARIZED, RUGGED,
AND INCREDIBLY CLEAR.



KATMAI



BECNARA



PACKOUT



SWITCHBACK



TRACER



FREEDOM LINE

FULLDRAW 4

BEHIND THE CORE

BOW KIT

DP PRO NIGHT VISION

DIALING FOR DISTANCE

BINO BREAKDOWN

PERFORMANCE EYEWEAR

FIELD TO TABLE

PRO GEAR

SCOPE FINDER

LIFETIME GUARANTEE



FREEDOM LINE

FULLDRAW 4

BEHIND
THE CORE

BOW KIT

DP PRO
NIGHT VISION

DIALING FOR
DISTANCE

BINO
BREAKDOWN

PERFORMANCE
EYEWEAR

FIELD TO TABLE

PRO GEAR

SCOPE FINDER

LIFETIME
GUARANTEE



FIELD TO TABLE

Summer is in full swing, and it's officially grillin' season. If you haven't used up all the elk meat in your freezer from last fall, then you're in for a real treat. Our Elk-ahuna Burger recipe is guaranteed to deliver a mouthwatering wild-game burger that's almost as memorable as the hunt it was harvested on.



FREEDOM LINE

FULLDRAW 4

BEHIND THE CORE

BOW KIT

DP PRO NIGHT VISION

DIALING FOR DISTANCE

BINO BREAKDOWN

PERFORMANCE EYEWEAR

FIELD TO TABLE

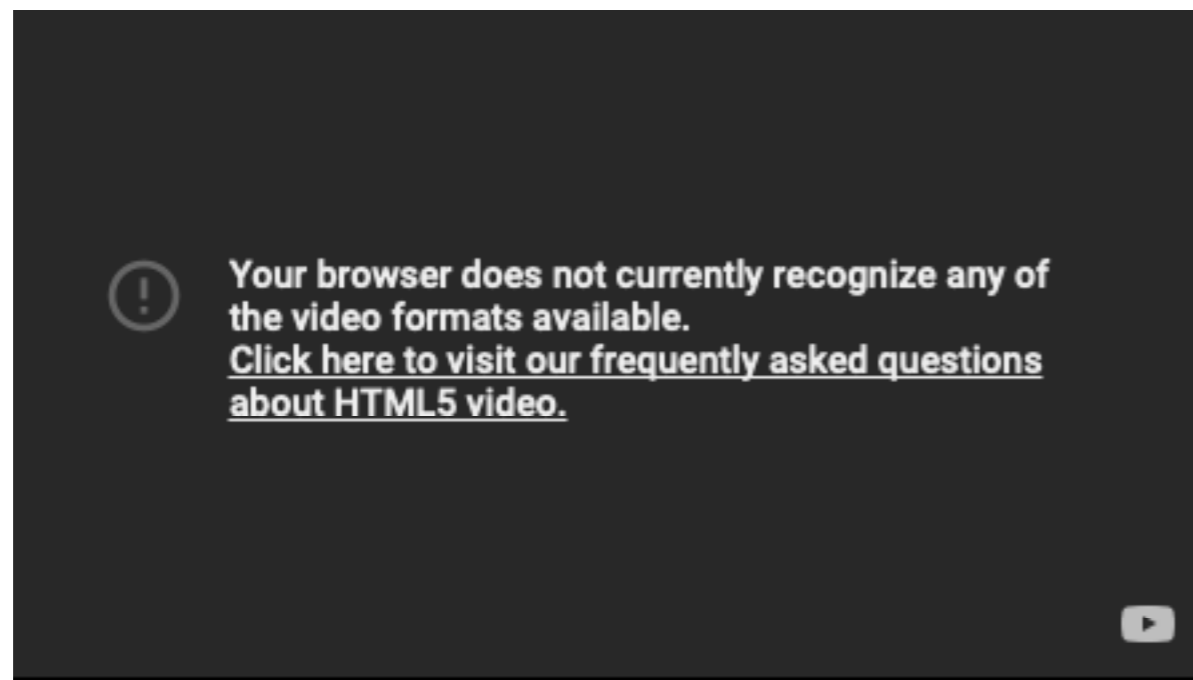
PRO GEAR

SCOPE FINDER

LIFETIME GUARANTEE

A SUMMERTIME SAVOR

Elk meat is considered a powerhouse of nutrition because it is high in protein and packed full of healthy vitamins and minerals such as zinc, vitamin B12, niacin, and B6. So what are you waiting for? Get grillin' and enjoy!



INGREDIENTS

BURGER PATTIES

- 26 oz of ground elk meat
- 9 oz bacon, diced into 3/4" pieces for mixing with the ground elk meat

TERIYAKI ONIONS

- 2 tbsp oil
- 1 large onion, sliced 1/4" thick
- 1/3 cup teriyaki sauce

FRANK'S MAYO

- 1 cup mayonnaise
- 1/4 cup Frank's Hot Sauce. May be substituted with any hot sauce.

GRILLED PINEAPPLE

- 1/2 pineapple

BURGER EXTRAS

- Burger buns
- American cheese
- Cilantro. Put cilantro in ice water for 10 minutes before using. Dry before use.
- Baby Kale. May be substituted for any lettuce.
- Sliced bacon

Makes approximately five 7 oz burgers.

STEP-BY-STEP INSTRUCTIONS

GRILLED PINEAPPLE

1. Remove the top and bottom of the pineapple and then remove the skin.
2. Quarter the pineapple and remove the core.
3. Slice the quarters into 3/8" pieces.
4. Over high heat, grill the pineapple slices to achieve grill marks on both sides. Approx. 2 minutes per side.
5. Set aside.

FRANK'S MAYO

1. Mix mayo and Frank's hot sauce and keep cool.

TERIYAKI ONIONS

1. Add oil to a hot pan followed by the sliced onions.
2. Sauté the onions over medium high heat and stir occasionally.
3. After 6-8 minutes, the onions should have browned and cooked down in size.
4. Add the teriyaki to the pan, mix well, cook for 1 minute, and remove from heat.

COOKING AND BUILDING BURGERS

1. Season the burgers with salt and pepper and grill over high heat.
2. Cook to your desired doneness. Make sure to only flip the burgers once. Be careful when moving the patties, they can be fragile.
3. Cook the bacon slices. Grill or pan works.
4. Crisp up the buns in a pan with some butter or bacon grease.
5. With 2 minutes remaining on the patties, top with cheese, a layer of teriyaki onions, and another layer of cheese.
6. Build the burger from bottom to top in this order:

- | | |
|---------------------|---------------------|
| • Bun heel | • Cheese |
| • Frank's mayo | • Bacon |
| • Grilled pineapple | • Cilantro |
| • Burger patty | • Lettuce |
| • Cheese | • More Frank's mayo |
| • Teriyaki onions | • Bun top |



SUMMERTIME PRO GEAR

Our newest gear is inspired by hunters and shooters and designed to keep up with even the most active lifestyle. Whether you're running drills at the range in the evening heat or disappearing into the woods on a crisp summer morning, our gear will keep you comfortable and cool, so you can keep doing what you do best.



SHED HEAD TEE

Attention shed hunters, this one is for you. The Shed Head Tee is the perfect shirt to rep your favorite brand and your favorite hobby—because there's no season like shed season.



BE RELENTLESS TEE

The Be Relentless Tee has our iconic duplex logo stamped across the back. Every time you put it on you'll remember that Leupold is relentless performance, and so are you.



CAMO PUFF HOODIE

Leupold's Puff Hoodie in Woodland Camo is guaranteed to look great whether you're in the woods or out on the town. Its sleek fit and functional design keeps up with your every move and never gets in the way.

LODEN GREEN RETICLE HAT

For a classic look, you can't go wrong with our classic snapback trucker in loden green. Semi-structured for a comfortable fit, and flying the iconic Leupold logo, this hat will never go out of style.



LEATHER PATCH SNAPBACK TRUCKER

An offset leather Leupold patch on a snapback semi-structured woodland camo/khaki. It's simple math, Leupold + leather + Woodland camo = must have.



PRO GUIDE BINOCULAR HARNESS

Keep your optics fully secured inside our new Pro Guide Binocular Harness. The soft fleece lining makes removing and replacing your binos silent and smooth, while a no-buckle magnet closure provides easy one-handed access without giving away your position.

FREEDOM LINE

FULLDRAW 4

BEHIND THE CORE

BOW KIT

DP PRO NIGHT VISION

DIALING FOR DISTANCE

BINO BREAKDOWN

PERFORMANCE EYEWEAR

FIELD TO TABLE

PRO GEAR

SCOPE FINDER

LIFETIME GUARANTEE



FREEDOM LINE

FULLDRAW 4

BEHIND
THE CORE

BOW KIT

DP PRO
NIGHT VISION

DIALING FOR
DISTANCE

BINO
BREAKDOWN

PERFORMANCE
EYEWEAR

FIELD TO TABLE

PRO GEAR

SCOPE FINDER

LIFETIME
GUARANTEE

PICKING THE RIGHT SCOPE

DON'T OVERCOMPLICATE IT

1

AVERAGE SHOT DISTANCE

Knowing your average shooting distance helps determine which magnification range is right for you.

2

BUDGET

Prices are primarily based on the features, versatility of the optic's magnification range, and erector system.

3

SPECIAL FEATURES

Features like the Custom Dial System (CDS), illumination, and firearm application affect the functionality of the scope and tailor it to specific applications.





FREEDOM LINE

FULLDRAW 4

BEHIND THE CORE

BOW KIT

DP PRO NIGHT VISION

DIALING FOR DISTANCE

BINO BREAKDOWN

PERFORMANCE EYEWEAR

FIELD TO TABLE

PRO GEAR

SCOPE FINDER

LIFETIME GUARANTEE



BUILT FOR A LIFETIME

Our optics are tested under the harshest conditions to make sure you can use them under the harshest conditions, without fail.

**RELENTLESS DEDICATION
AMERICAN MANUFACTURING AT LEUPOLD**



WATERPROOFING AND FOGPROOFING

From torrential downpours to crossing rivers, you'll never have to worry about a Leupold scope leaking or fogging up. Our proprietary gas blend and seals are tested up to a submergence depth of 66 ft. and a multitude of pressure changes.



IMPACT TESTED AND VERIFIED

We purpose built a machine to replicate the most extreme impact signature imaginable. The actual rifle doesn't exist, but if it did, and you shot it, you would instantly regret it. You would be knocked unconscious, suffer a concussion, burst blood vessels in your eyes, and detach your retinas. Every scope we make, from a \$200 VX-Freedom, to our \$4500 Mark 8 has to survive 5000 impacts at this energy, all while retaining its functionality and holding a perfect zero.



EXTREME CLIMATE EXPOSURE

We make sure our optics perform at the highest level in the harshest conditions by ensuring they will survive from -40 degrees Fahrenheit all the way up to 160 degrees Fahrenheit.





LEUPOLD

REPRESENT THE CORE

Tag your photos with #LeupoldCore and mention @LeupoldOptics for a chance to be featured on Leupold's social media platforms.

@LeupoldOptics | #LeupoldCore

LEUPOLD.COM

